



FAB

LAB

Architect Shonan Purie Trehan hones the language of architecture with poetic sensibility, scientific rigor and human purpose

www.labwerk.in



What's your definition of design and architecture?

SPT: It is this incredible intersection of anthropology, science, craft, engineering, environment, economy, industry, art, psychology, culture and invention that makes the practice of architecture inescapable. I have deep interests in each of these fields and the architecture is a complex juggling act of all of these interests. Design interventions can delicately or drastically alter the culture of habitation.

Tell us a little about yourself and LAB.

SPT: After completing my Bachelor of Architecture from the Rhode Island School of Design (RISD) in the USA, I worked at Eisenmen Architects in New York City. I completed my Master of Architecture from Bartlett School of Built Environment, London, UK, with a focus



APERTURE HOUSE, New Delhi

The structure of the pavilion extends along the wall as the library bookshelf



(Left - right)

**1. ROTI KAPDA
MAKAAN**

*Home retail store,
Raghuvanshi Mills,
Mumbai*

2. FACTORY HOUSE

*A mobile bookcase
partitions the common
space, Mumbai*

on Advanced Architectural Design. I'm the founder and Principal Architect of Mumbai-based Language. Architecture. Body (LAB), which is a laboratory for creating architecture. We have a team of experienced architects and planners, all alumna of leading international architecture firms.

What are the expectations from your team?

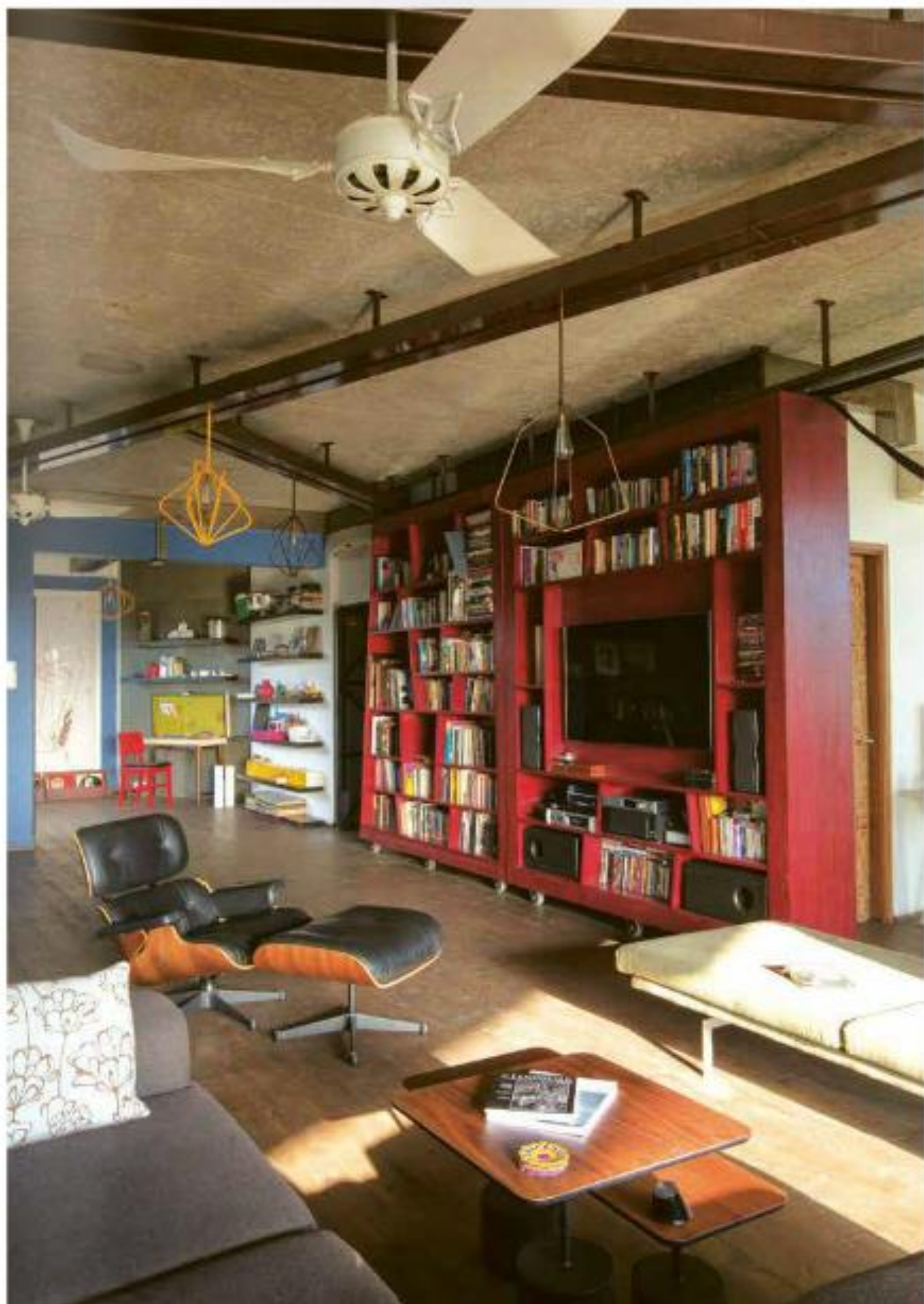
SPT: Think, Make, Build. Be a psychologist, be an artist, be a wordsmith, be a gardener, be a cook!

What is your design philosophy?

SPT: Staying centered, but outside the circle. We follow a 'form' follows 'culture' design principle. We also believe architecture is the practice of innovation - it is fundamental.

How do you usually approach a project?

SPT: The project usually starts as a dialogue between key words, insightful sketches and inspired ideas. Our clients are asked to respond to a survey; this helps maps the aspirations of the project. As a collaborative team of architects we then have intense sketch storms. The output of these sessions is then filtered into an 'Idea Bank' for the project. This serves as a design compass through the project. We have ongoing



ARCHITECTURE





(Left - right)

1. PLAY HOUSE, A door within a door within a door, New Delhi

2. REFLECTION HOUSE, Soft timber partitions divide the sleeping and living spaces, New Delhi

research in the office that runs parallel to the design work. We then find appropriate applications for the found outcomes. The pace of projects in this economy rarely allows for research specific to the project.

How does experimentation feature in your work?

SPT: Experimentation is a constant in our work. Material research and invention is an eternal focus in our practice. We have been working on a self-structuring brick for over a year. It started with a brick design workshop and now we are ready for the first prototypes to be fabricated. We are also working with various cast-in place surface solutions. In most of our projects highly customized bespoke design elements are developed for the project. We design and fabricate lights, furniture, architectural elements and sculptural products.

Who has been your inspiration in the field of architecture?

SPT: Alvar Aalto, Allen Ginsberg, Carlos Scarpa, Walt Whitman, Gertrude Stein, Renzo Piano, Herzog and De

